

## “Paisley Pillow Design”

-----



The ever popular paisley print will be the theme for this project tutorial. Learn how CustomWorks™ and SizeWorks™ with their powerful tools will take the guess work out of sizing and merging designs.

**Skill Level:** Beginner

**Created by:** Diane Kron, Software and Embroidery Project Manager

## Supplies:

CustomWorks™ by Designer's Gallery® (Installed)

SizeWorks™ by Designer's Gallery® (Installed)


Baby Lock® embroidery machine with 160mm x 260mm sewing field or larger


Amazing Design's Paisley I Design Collection (ADC31J) (Installed)

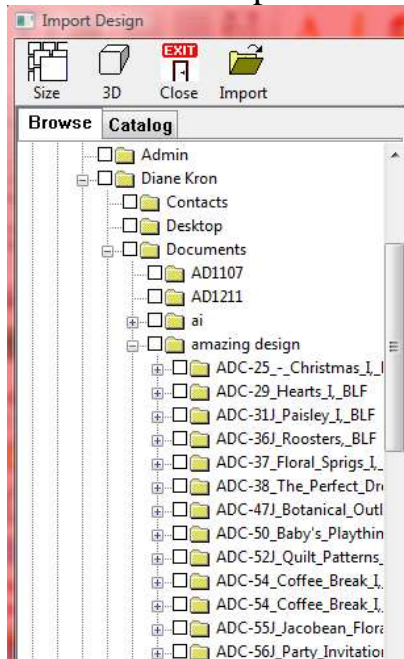
## Instructions:

General directions: We will use three different design sizes for the pillow - the original design size and two resized designs. The project directions will cover the two designs that will be resized. The largest hoop for the Ellegante sewing and embroidery machine was used. If a smaller hoop is used, make the designs smaller than noted in the directions so that the completed design will fit in the hoop. The completed design used only one hooping. The three different design sizes were merged together to create the final design.




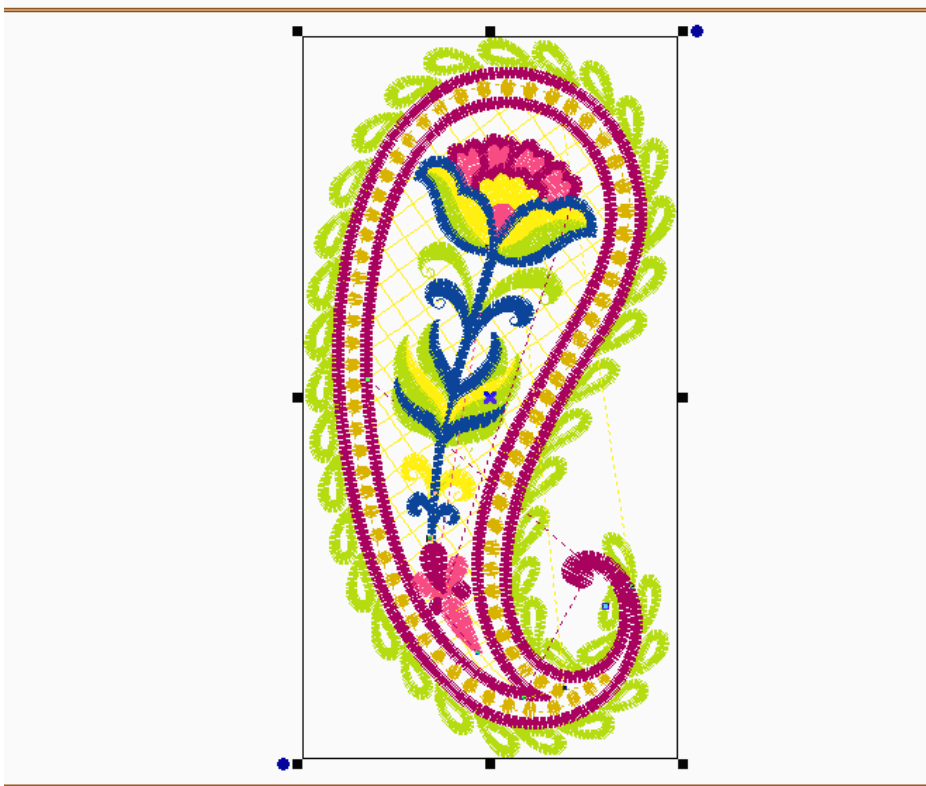
1. Open the program by clicking on the CustomWorks icon  on the desktop.

2. Click on Merge Design  and open the folder where the Paisley I designs were installed. Double click to select the design named Paisley1 from the list and place the design on the workspace.

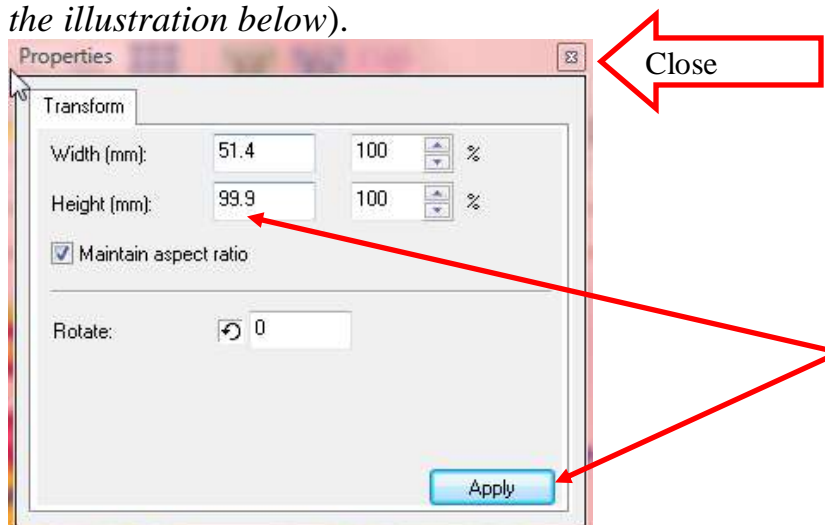


3. To place the hoop on the workspace, click on Menu View. From the list of commands choose Select Hoop. Choose the 180mm x 300mm hoop size. Place a checkmark next to Rotate 90. Click on OK.

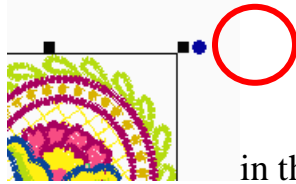
- To select the design, left click anywhere on the design. Click on Flip Vertical  to reposition the design so that the flower is pointing upward.



- To duplicate the design, right click on the design and choose Copy for the list of commands. Right click once more and select Paste.
- The duplicated design will be selected. Move the cursor over the design. When the hand appears as the cursor, left click and move the duplicated design to the right of the original design.
- To resize this design, right click and select Properties from the list. Resize the Height to 99.9mm. Click on Apply and close the field. (*See the illustration below*).



8. To move the resized design into position, click on Flip Horizontal. Use

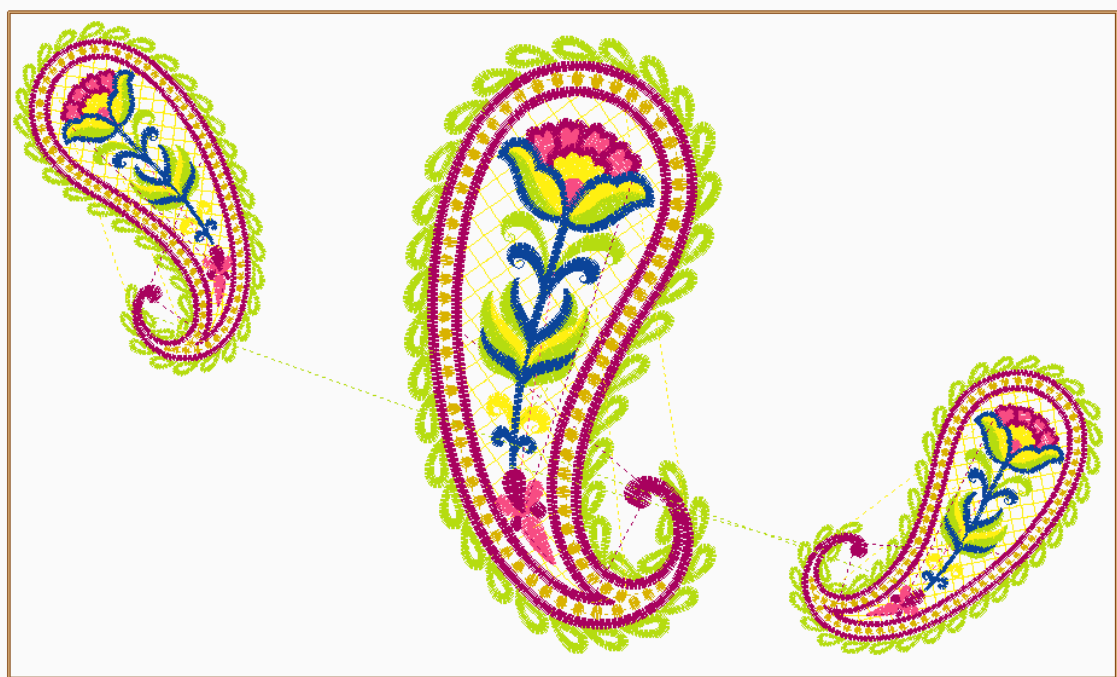


the Blue Rotate Tool in the top right corner, outside the selection box, to rotate the design. Move the design close to the bottom right corner of the hoop (*as shown in the illustration below*).



9. Select the resized design. Copy and Paste to duplicate this design.


10. Move the duplicated design to the left side of the original design. Place this design in the top right corner of the hoop. Use the Blue Rotate Tool to rotate the design. (*See the illustration below for rotation and placement*).

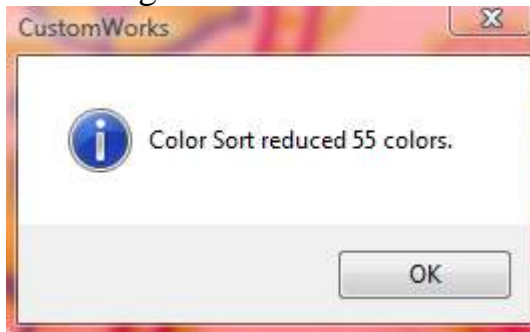


11. Select the top left design. Duplicate and resize this design, making it smaller. Then, duplicate the design several times and move these designs into position to finish.
  - Duplicate the design by using the Copy and Paste function.
  - Move the design.
  - Open the Properties field and resize the design to reflect 65mm for the Height.
  - Copy and Paste the design three additional times. (*See the illustration below.*)
12. Place two designs on each side of the original design. Use either the Flip Vertical or Flip Horizontal tool to manipulate the designs. Use the Blue Rotate Tool to fine tune the rotation of each of the designs. (*See the illustration below for placement of the designs.*)



13. Under Sequence View, select All Items.

14. Click on Color Sort  to rearrange the color order and to reduce the number of thread changes. The dialog box will show the reduced number of color changes in the design. There should be 8 color changes remaining.



15. The next and final step will be to save the design. Click on File, Save As. Give the design a name and save to the media source that your machine will read.

16. Using your favorite pillow instructions, embroider the design onto the fabric of your choice.

For other exciting projects like this one, visit our Web site at [www.designersgallerysoftware.com](http://www.designersgallerysoftware.com)

