



Craftyduo

WEBINARS

Designer's Gallery & Silhouette CAMEO®

Mardi Gras Centerpiece

This festive centerpiece is easy to make just in time for a Mardi Gras party. Using Designer's Gallery® EmbroideryWorks™ with a Silhouette® cutting system, you can transform embroidery designs into this fun décor.



Skill Level: Easy


Created by: Diane Kron, Software and Embroidery Project Manager

Supplies:

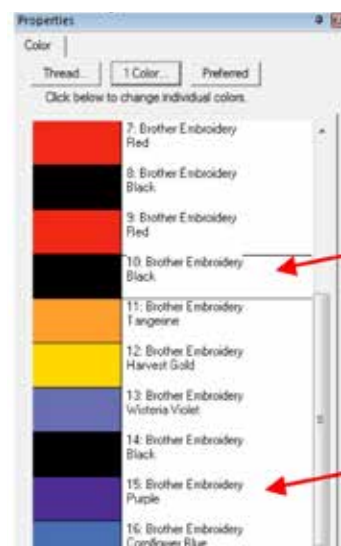
- Baby Lock® sewing and embroidery machine
- Silhouette® cutting system
- EmbroideryWorks™ Everyday from Designer's Gallery®
- Fleur-De-Lis design was purchased from www.planetapplique.com
- Mardi Gras Mask design was purchased from www.planetapplique.com
- Printable heat transfer material (black) for lettering
- Purple and green vinyl from Silhouette
- 1 each of yellow, purple and green solid glitter card stock
- Transfer tape
- 1 yellow tin container purchased from **Hobby Lobby** with styrofoam insert
- Hot glue gun and glue sticks
- 9 ¼" round purple painted dowels 12" long
- Mardi Gras beads for filling container

Instructions:

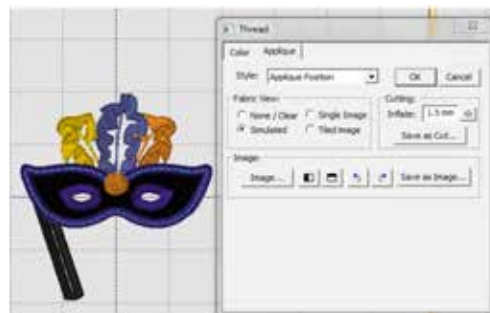
At the Computer- Mask Design

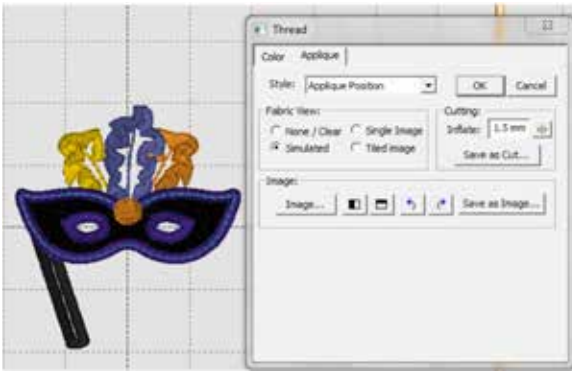
1. Open the program by clicking on the EmbroideryWorks icon  on the desktop.
2. Click open and merge in the Mardi Gras Mask design from its saved location.

3. To save the design elements to a Silhouette file format, click on the color chip numbers 10 and 15 individually in the Properties field.



4. When the Thread dialog box opens, select the Appliqué tab and follow the next set of steps:
 - Under the Style option, click on the down arrow and select Appliqué Position.
 - Under Fabric View, select Simulated. Note how the area turns to a solid color as shown in the illustration below in black.
 - To save the area, click on Save from the cutting area. You can create a folder or use a pre-existing folder and save the design as a Studio file format that can be read in the Silhouette cutter. Give the image a name.





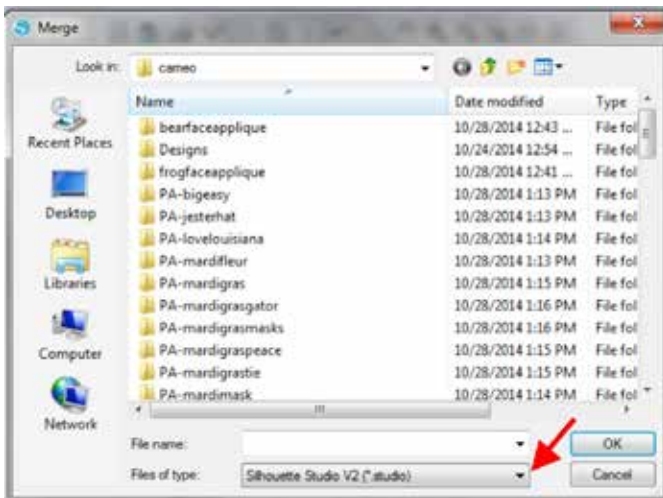
- Select number 15 color chip and repeat the above steps. Give the eyes a different name.
- No other elements within the design will be used.

Fleur-De-Lis Design:

1. To create the design elements, follow the directions as shown under the Mardi Gras shirt project At the Computer.

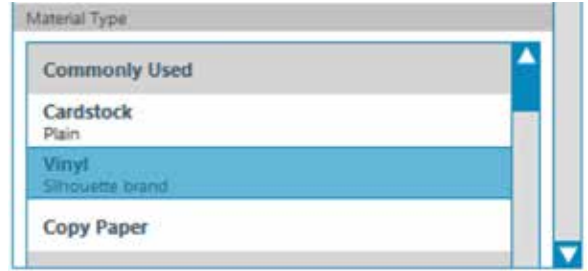
At the Silhouette Cutter:

1. Connect the computer to the Silhouette and turn on the Silhouette cutter.
2. Merge the two sections of the fleur-de-lis design onto the workspace by clicking on File Merge. Retrieve the images from the saved location. When selecting the files, change the Files of Type to Silhouette Studio V2 as shown below. Merge the design elements individually onto the workspace and place the sections back together to look complete.

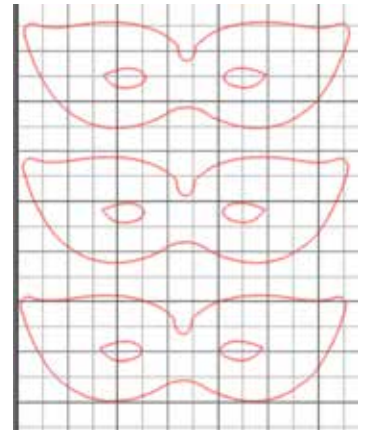


3. If you wish to resize the completed design as one unit, draw a box around all of the components in the design and drag the corner handles outward until you are satisfied with the size. If you make a mistake, use the undo tool.

4. Select the Cut Settings icon on the top toolbar and set the cutter up for Vinyl. Adjust the depth of the blade to the manufacturer's recommended setting.



5. Place the vinyl on the Silhouette cutting mat and load onto the Silhouette machine.
6. Click Send to Silhouette. The cutter will then cut the design.
7. Weed out the negative sections from the cut design. Place the Transfer tape over the lettering and press with the scraper so that the lettering sticks to the transfer tape.
8. Apply the vinyl cut out to the front center on the tin container.
9. Remove the fleur-de-lis design from the workspace.
10. Retrieve the two sections for the Mask. Place the eyes on the mask shape. Right click and Group the sections together.
11. Duplicate the design three times and stack them on the workspace three deep as shown.



12. Select the Cut Settings icon on the top toolbar and set the cutter up for Glitter Cardstock. Adjust the depth of the blade to the manufacturer's recommended setting.
13. Place the yellow glitter cardstock on the mat and load the mat into the cutter.
14. Click Send to Silhouette to make this cut.
15. Repeat Steps 13 and 14 for the other two colored pages of the cardstock.
16. Hot glue the mask cut-outs to the top of a dowel stick.
17. Arrange the masks in the tin container and place beads over the styrofoam to finish.

Look for other Mardi Gras projects for Designer's Gallery & Silhouette at www.designersgallerysoftware.com.